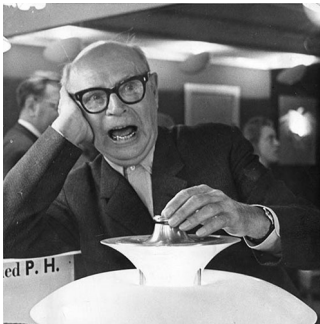
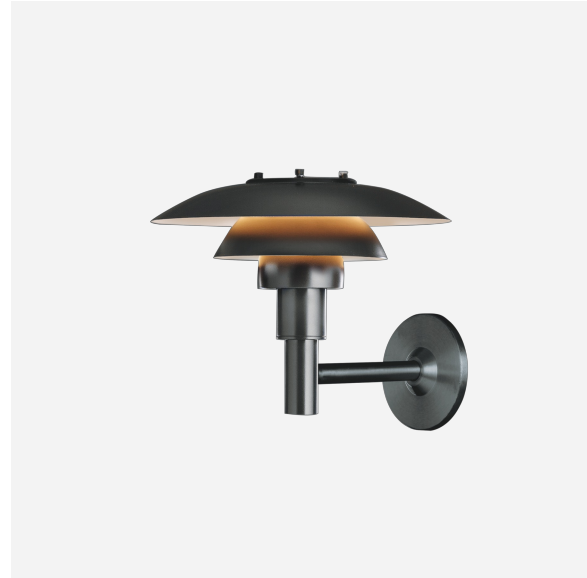


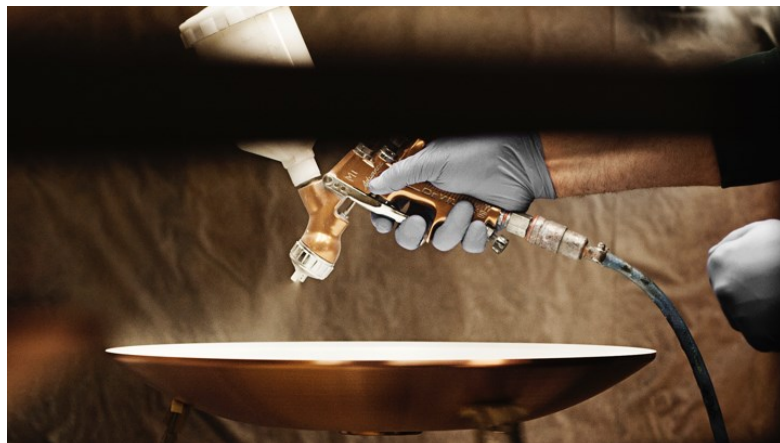
PH 3-2½ WALL

The fixture is designed based on the principle of a reflective three-shade system, which directs the majority of the light downwards. The shades have a matte white painted interior surface, diffusing the light in a comfortable way.



Poul Henningsen

Poul Henningsen was born in Copenhagen by the famous Danish writer Agnes Henningsen. He never graduated as an architect, but studied at The Technical School at Frederiksberg, Denmark from 1911-14, and then at Technical College in Copenhagen from 1914-17.



Product info

Information

Electrical: System Wattage: 15 W Delivered lumens: 720 lm Efficacy: 48.0 lm/W Certifications: cULus, Wet Location Protection class IP44 BUG Rating: B0-U3-G1 Controllability: Phase dimming Min.-Max. Ambient Temp: -20°C to +40°C Actual performance dependent upon screw-base lamp used.

Mounting

Surface: Mounted directly to finished surface over a recessed 4" octagonal junction box.

Finish

Black, powder coated.

Materials

Top shade: Spun stainless steel. Middle/lower shade: Spun stainless steel. Shadeholder: Die formed glass. Mounting plate: Die cast aluminum. Mounting plate cover: Spun aluminum. Arm: Stainless steel.

Sizes and weight

Width x Height x Length (in.) | 11.1 x 10.9 x 12.1 Max 4.0 lbs

Compliance

cULus, Wet location.

Light source

1x15W A-19/medium

Information

Electrical:

System Wattage: 15 W

Delivered lumens: 720 lm

Efficacy: 48.0 lm/W

Certifications:

cULus, Wet Location

Protection class IP44

BUG Rating: B0-U3-G1

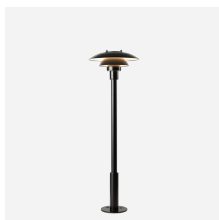
Controllability: Phase dimming

Min.-Max. Ambient Temp: -20°C to +40°C

Actual performance dependent upon screw-base lamp used.



Related products



PH 3-2½ Bollard

Product variants

Light source

1x15W A-19/medium

Voltage frequency

120V

Product description

The fixture is designed based on Poul Henningsen's renown three shade reflector system, which has no glare and provides a gentle illumination of the shade, while directing a majority of the light downward. The black shades have a matte white interior surface to efficiently reflect and diffuse the light.

Mounting

Surface: Arm mounted directly to the wall with a 5.9" diameter plate, centered over junction box. The three 0.37 inch mounting holes are arranged in a 5.2 inch diameter at 120 degrees. Mounting hardware by others.

Light description

The luminaire emits symmetrical glare-free light directed downwards and outwards, from a screw-base lamp (by others). The shades have a matte white painted interior surface, diffusing the light in a comfortable way. Form of the luminaire can be appreciated illuminated at night as well as during the daylight.

Design

Poul Henningsen

Material

Shades: Spun stainless steel, 0.04" thick. Arm: extruded stainless steel, 0.06" thick. Lamp enclosure: Die formed clear glass, 0.2" thick. Mounting plate: Die cast aluminum, 0.24" thick. Mounting plate cover: Spun aluminum, 0.04" thick.

Standard finish is matte, smooth surface powder coat with minimum 2 mils thickness in black.

Weight

4.041

Other functions

Custom finishes. Custom wall brackets.

Finish

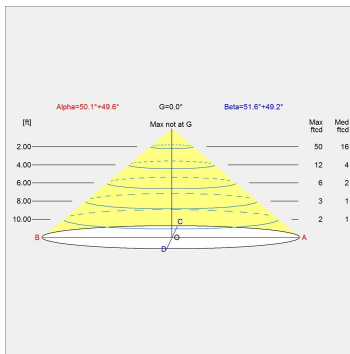
Black

Voltage

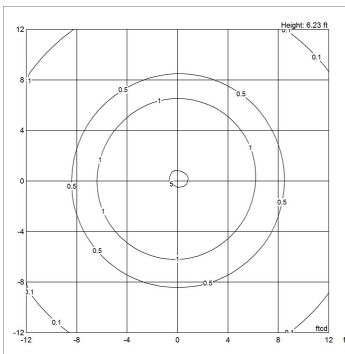
120V

Light distribution diagrams

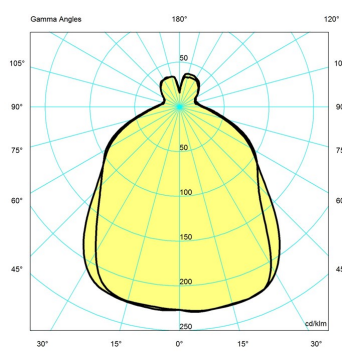
Cartesian



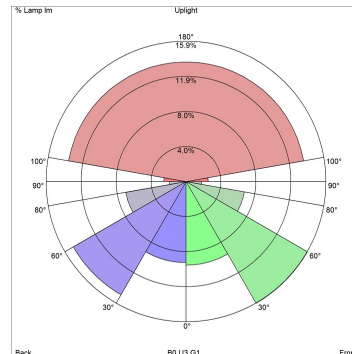
Isolux



Polar



Bug



Spare parts & accessories

Product

- PH 3-2½ Bollard/Wall, 3 x black top screws
- PH 3-2½ Bollard/Wal glass
- ANTI-THEFT SCREWS 3 PCS M4X25, ST. STEEL
- GRUB SCREW MS M12X12 (3PCS)

Variant number

- 5747293405
- 5747293418
- 5743145405
- 5743145887